



Natural Resources
Canada

Ressources naturelles
Canada



Surveyor General Branch

Beyond Boundaries

sgb.nrcan.gc.ca



3rd Generation Web Mapping REST Endpoints



July 6, 2014

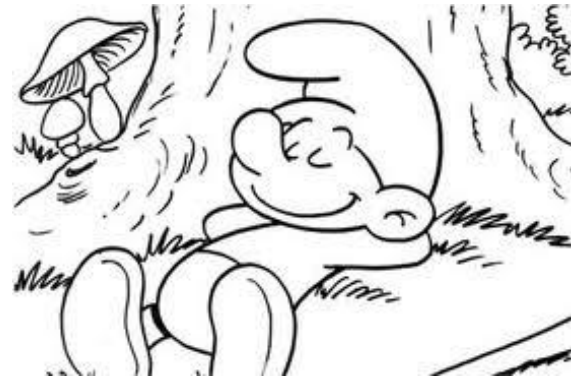
By Gido Langen

Canada



The Mission

- REST Endpoints
 - Establish a network of REST endpoints
- Rationale
 - Effective way of providing web resources
 - Easy to work with the resulting info





REST Endpoints

- `http://....`

Re presentational (represents resources)

S state (all information such as login)

T transfer (each request)



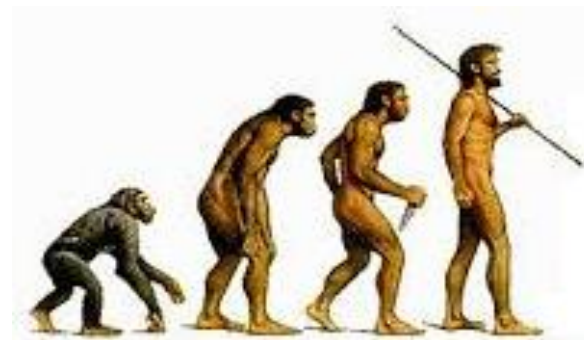
REST Endpoint Examples

- <http://www.sample.com/phonebook/UserDetails/12345>
- <http://www.sample.com/phonebook/UserDetails?firstName=John&lastName=Doe>



Presentation Outline

- Technological background
- First generation
- Second generation
- Third generation
- Conclusion





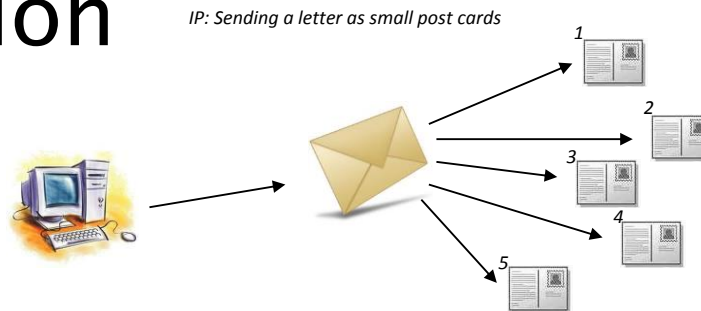
Technological Background

- The three components of web mapping
 - Web server
 - Map server
 - GIS database



Technological Background 1

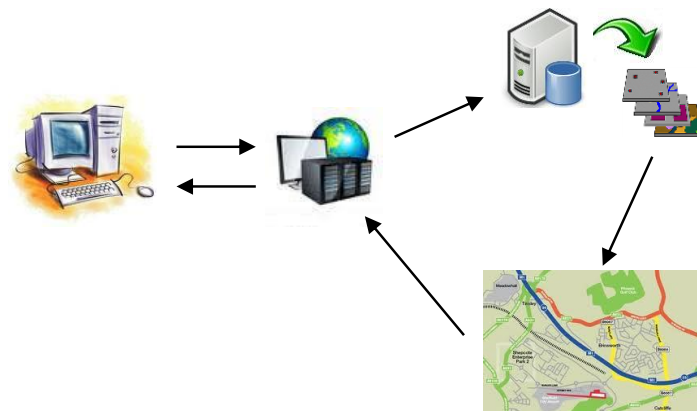
- The web server
 - Connections
 - Cumminication





Technological Background 2

- The map server
 - GIS program
 - Input/output





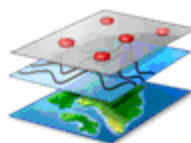
Technological Background 3

- The GIS database

- Database



- Rendering mechanism



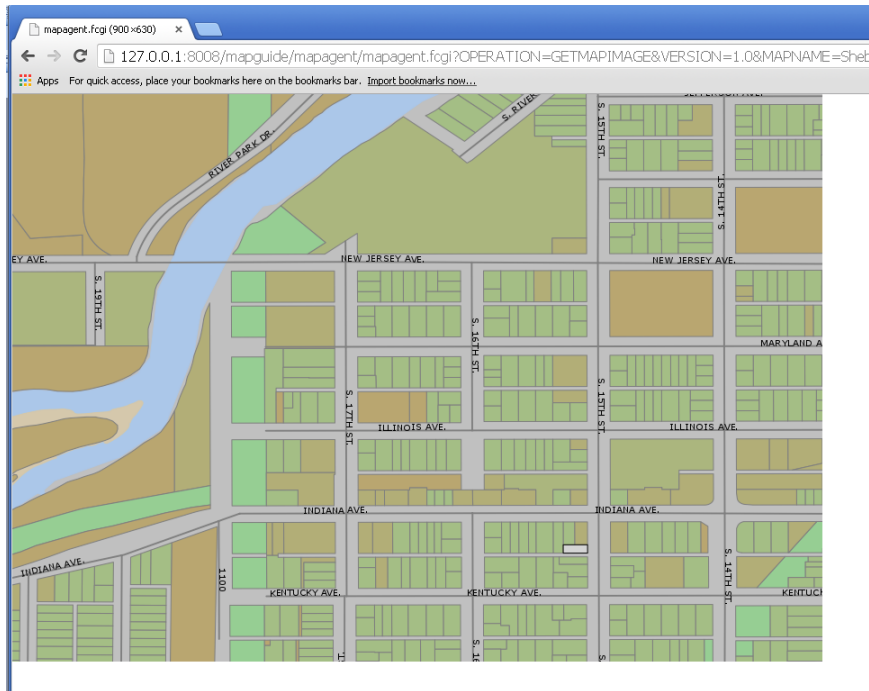


1st Generation Web Mapping

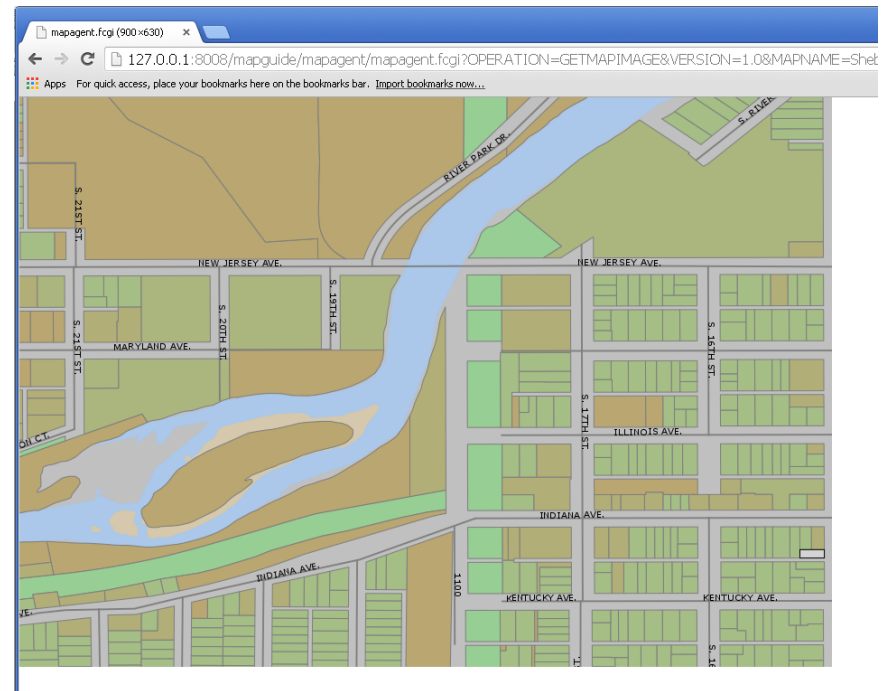
- The laborious way
 - Transparent
 - Tons of programming



```
http://127.0.0.1:8008/mapguide/mapagent/mapagent.fcgi?  
OPERATION=GETMAPIIMAGE& VERSION=1.0&  
MAPNAME=Sheboygan& LOCALE=en&  
MAPDEFINITION=Library%3A%2F%2FSamples%2FSheboygan%2FMaps%2FSheboygan.MapDefinition&  
FORMAT=PNG&  
SETVIEWCENTERX=-87.73& SETVIEWCENTERY=43.74& SETVIEWSCALE=10000&  
SETDISPLAYWIDTH=3000& SETDISPLAYHEIGHT=2100
```



[http://www.mapserver.web/mapping?](http://www.mapserver.web/mapping?OPERATION=GETMAPIMAGE&VERSION=1.0&MAPNAME=Shet)
OPERATION = GETMAPIMAGE
SETX = -87.72
SETY = 43.74
SCALE = 5000



[http://www.mapserver.web/mapping?](http://www.mapserver.web/mapping?OPERATION=GETMAPIMAGE&VERSION=1.0&MAPNAME=Shet)
OPERATION = GETMAPIMAGE
SETX = -87.73
SETY = 43.74
SCALE = 5000



2nd Generation Web Mapping

- More robust
 - Commercial software tools
 - Faster tools, easier programming





3rd Generation Web Mapping

- The future is here
 - Faster and easier than ever
 - It's free
 - REST endpoints





Conclusions

- Increased quality control
 - Crowd sourcing
- Faster response time
 - Facilitate external dev.
- Focus on core business
 - Eliminate costly development